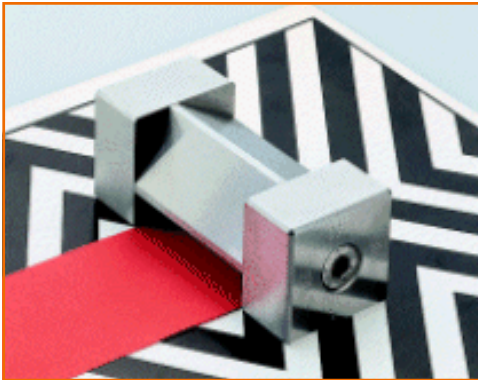


# Elcometer 3550/3540 Bird Film & 3545 Adjustable Bird Film Applicators



Elcometer 3550 and 3540 Bird Film Applicator

Can be used in accordance with:	
ASTM D 3022	ASTM D 823
FTMS 141a M2161	FTMS 141a 4122.1
FTMS 141a 2162	

## Elcometer 3550 & 3540 Bird Film Applicators

These easy to clean gauges are manufactured to the highest accuracy. Precision ground stainless steel Bird Film Applicators have a flat edged prismatic body making them suitable for various products applied to a flat and relatively strong substrate.

The Elcometer 3550 Bird Film Applicator has 2 gap sizes, whereas the Elcometer 3540 has 4 gap sizes per applicator.

Both versions are available in a range of film widths and can be used with the Elcometer 4330 and 4340 Motorised Film Applicators.

## Film Application & Test Charts

For numerous products such as paint, ink, varnishes, glue and cosmetics, the reliability of many laboratory tests is directly related to the quality of the samples prepared from it.

It is absolutely essential that any measurements made on such coatings, whether for the purpose of describing their appearance or their physical properties (colour, gloss, hiding power, drying time, etc), are made on the basis of uniform and comparable samples with precisely controlled thickness.

In order to meet such specific demands, Elcometer has a wide range of high quality, high precision film applicators and motorised film applicators for greater repeatability and reproducibility when undertaking a large number of sample tests.

Elcometer also offer a wide range of Leneta Test Charts – the market standard – to meet all your specific requirements



Elcometer 3545 Adjustable Bird Film Applicator

## Elcometer 3545 Adjustable Bird Film Applicators

Manufactured to the same high standards as the Elcometer 3540 and 3550 Bird Film Applicators, the Elcometer 3545 Adjustable Bird Film Applicators are user adjustable.

By choosing different settings each end (using the gap size scale), a wedge shaped film can be applied.

Available in a number of film widths, these high precision applicators can be used manually or with the Elcometer 4330 and 4340 Motorised Film Applicators.

Can be used in accordance with:	
ASTM D 3022	ASTM D 823
FTMS 141a M2161	FTMS 141a 4122.1
FTMS 141a 2162	

Elcometer 3550 & 3540 Bird Film Applicators							
Model	Number of Gaps	Film Gaps		Film Width		Part Number	
		µm	mils	mm	inches	Metric	Imperial
Elcometer 3550/1	1	50	2	50	2	K0003550M001	K0US3550M001
Elcometer 3550/2	1	50	2	75	3	K0003550M002	K0US3550M002
Elcometer 3550/3	1	50	2	100	6	K0003550M003	K0US3550M003
Elcometer 3550/1	1	75	3	50	2	K0003550M201	K0US3550M201
Elcometer 3550/2	1	75	3	75	3	K0003550M202	K0US3550M202
Elcometer 3550/3	1	75	3	100	6	K0003550M203	K0US3550M203
Elcometer 3540/1	4	50, 100, 150, 200	2, 4, 6, 8	50	2	K0003540M001	K0US3540M001
Elcometer 3540/2	4	50, 100, 150, 200	2, 4, 6, 8	75	3	K0003540M002	K0US3540M002
Elcometer 3540/3	4	50, 100, 150, 200	2, 4, 6, 8	100	4	K0003540M003	K0US3540M003
Elcometer 3540/4	4	50, 100, 150, 200	2, 4, 6, 8	150	6	K0003540M004	K0US3540M004
Elcometer 3540/5	4	50, 100, 150, 200	2, 4, 6, 8	200	8	K0003540M005	K0US3540M005
Elcometer 3540/6	4	50, 100, 150, 200	2, 4, 6, 8	250	10	K0003540M006	K0US3540M006
<b>Packing List</b>	Elcometer Film Applicator, Storage case & Operating instructions						
Other gaps and film widths are available upon request							

Elcometer 3545 Adjustable Bird Film Applicators							
Model	Number of Gaps	Film Gaps		Film Width		Part Number	
		µm	mils	mm	inches	Metric	Imperial
Elcometer 3545/1	Adjustable	0 - 250	0 – 10	50	2	K0003545M201	K0US3545M201
Elcometer 3545/2	Adjustable	0 - 250	0 – 10	75	3	K0003545M002	K0US3545M002
Elcometer 3545/3	Adjustable	0 - 250	0 – 10	100	4	K0003545M203	K0US3545M203
Elcometer 3545/4	Adjustable	0 - 250	0 – 10	125	5	K0003545M004	K0US3545M004
Elcometer 3545/5	Adjustable	0 - 250	0 – 10	150	6	K0003545M005	K0US3545M005
Elcometer 3545/6	Adjustable	0 - 250	0 – 10	175	7	K0003545M006	K0US3545M006
Elcometer 3545/7	Adjustable	0 - 250	0 – 10	200	8	K0003545M007	K0US3545M007
Elcometer 3545/8	Adjustable	0 - 250	0 – 10	250	10	K0003545M008	K0US3545M008
<b>Packing List</b>	Elcometer Film Applicator, Storage case & Operating instructions						

## Related products



Elcometer 3520

The baker film applicator is made of hardened stainless steel and has a cylindrical applicator body. Used to apply a pre-defined thickness and film width on flat, relatively firm surfaces.



Elcometer 3580

Manufactured out of anodised aluminium and with a bevelled blade, these applicators are ideal for manually applying thick layers of coatings on solid and flat substrates. Films can be applied up to 6mm thick - the thickness being determined using the micrometric screws on the unit.



Elcometer 3600

This simple applicator can be adjusted to allow the user to apply a uniform film up to a thickness of 1mm (40 mils). Accurate thickness settings are produced using the thickness standards supplied with the gauge.



Elcometer 4330

This simple automatic film applicator is supplied with a system for fixing spiral bar applicators, or other Elcometer film applicators. Samples are secured with a simple clamp and three buttons control the operation and direction of the applicator.



Elcometer 4340

When preparing a wide range of samples with different coatings and on various substrates, the Elcometer 4340 film applicator is the unit for you. Designed with 11 pre-set speeds, coatings can be applied with total consistency. A range of tables and adaptations can be selected. Vacuum, electromagnetic or heated tables, drying time recorders and gelatine devices are available.



Leneta test charts

Elcometer supply a wide range of Leneta Test Charts, from plain white to those having different patterns of black and white. Produced from high quality, non-fluorescent paper, free of optical brighteners that may affect colour measurements, Leneta Test Charts are the market standard in today's coatings industry.

### ENGLAND

Elcometer Ltd  
Edge Lane  
Manchester M43 6BU

Tel: +44 (0)161 371 6000  
Fax: +44 (0)161 371 6010  
e-mail: sales@elcometer.com  
www.elcometer.com

### USA

Elcometer Inc  
1893 Rochester Industrial Drive  
Rochester Hills Michigan 48309

Tel: +1 248 650 0500  
Toll Free: 800 521 0635  
Fax: +1 248 650 0501  
e-mail: inc@elcometer.com  
www.elcometer.com

### CANADA

Elcometer Ltd  
PO Box 622, 401 Ouelette Avenue  
Windsor, Ontario N9A 6N4

Tel: +1 248 650 0500  
Toll Free: 800 521 0635  
Fax: +1 248 650 0501  
e-mail: ca\_info@elcometer.com  
www.elcometer.com

### ASIA & THE FAR EAST

Elcometer (Asia) Pte Ltd  
896 Dunearn Rd  
Sime Darby Centre #3-09  
Singapore 589472,  
Republic of Singapore

Tel: +65 6462 2822  
Fax: +65 6462 2860  
e-mail: asia@elcometer.com  
www.elcometer.com

### BELGIUM

Elcometer SA  
Rue Vallée 13  
B-4681 Hermalle /s Argenteau

Tel: +32 (0)4 379 96 10  
Fax: +32 (0)4 374 06 03  
e-mail: be\_info@elcometer.be  
www.elcometer.be

### FRANCE

Elcometer Sarl  
97 Route de Chécý  
45430 BOU

Tel: +33 (0)2 38 86 33 44  
Fax: +33 (0)2 38 91 37 66  
e-mail: fr\_info@elcometer.fr  
www.elcometer.fr

### GERMANY

Elcometer Instruments GmbH  
Ulmer Strasse 68  
D-73431 Aalen

Tel: +49 (0)7361 52806 0  
Fax: +49 (0)7361 52806 77  
e-mail: de\_info@elcometer.de  
www.elcometer.de