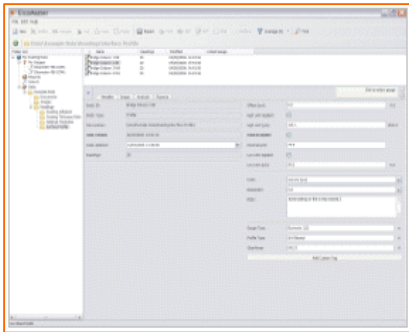


ElcoMaster™ Data Management Software

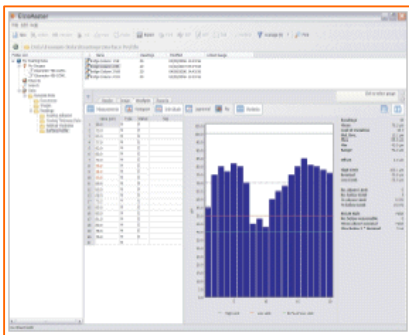
Whether you want to use the data for analysis or to create professional reports for distribution to customers or colleagues, ElcoMaster™ can help. With built in report templates and easy access of all data, images and other associated files, ElcoMaster™ makes managing your data simple.



The software has been designed to be familiar and intuitive to any PC user. When the gauge is connected to the PC, individual readings can be sent directly into the software for real time analysis or simply 'drag and drop' a batch from the gauge to the software.

You can store all of your associated job or inspection files, health and safety reports etc. within ElcoMaster™ - providing you with one programme that holds all of your inspection information in one place.

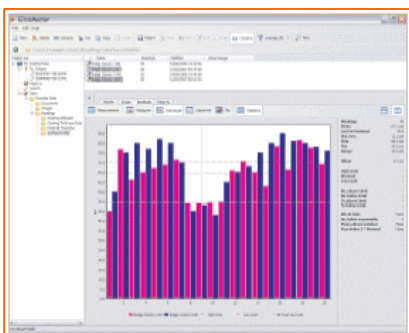
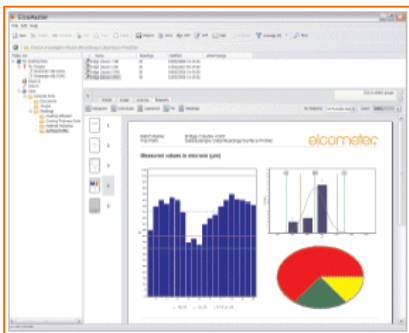
Viewing data and producing standard reports is achievable in just a few clicks. Fully customised reports can be produced quickly by using the ElcoMaster™ report designer.



In addition to the readings and charts, you can also assign a digital photograph to an individual batch of data, allowing you to visually display the inspection area in your reports. Batches can be combined for immediate comparison of data from various areas of the job site.

ElcoMaster™ features include:

- Create professional reports in seconds.
- Export reports to spreadsheets, text files or save as PDF or JPEG files.
- Copy and paste reports into other documents.
- Reports can be combined in order to clearly compare different batches.
- E-mail reports directly from ElcoMaster™.
- Assign batch identification tags.
- Batches can be renamed to clearly identify the inspection batch.
- Wide range of standard reports include;
 - Individual measurements
 - Statistics
 - Histograms
 - Individual line or bar charts
 - Log normal
 - Pie charts
- Fully customise reports using the ElcoMaster™ report designer tool.
- Include company graphics and logos on every report.
- Combine batches to compare readings or link batches together from different gauges into one comprehensive inspection file.
- Find feature to quickly locate a specific file or batch.



Related Products



Elcometer 319

Elcometer 319 Dewpoint Meter

Available in two models, Standard and Top, the Elcometer 319 has been specifically designed to measure and record all relevant climatic parameters required to determine whether conditions are suitable for painting. It's rugged and ergonomic design is dustproof and waterproof equivalent to IP66 and incorporates fully sealed, durable sensors.

The Elcometer 319 Top has a large inbuilt memory to accurately record each measurement, storing up to 25,000 sets of readings in 999 batches. It also offers USB data output and *Bluetooth*[®] wireless technology for cable free data transfer.



Elcometer 224

Elcometer 224 Digital Surface Profile Gauge:

An accurate way to measure surface profiles in microns and mils. The Elcometer 224 S is an ideal gauge for quality checking the surface profile. Although the gauge has no memory, it does display statistical values as readings are taken.

The **Elcometer 224 T** works in the same way as the model S, but has the advantage of a large built-in memory to accurately record each measurement. The memory is able to store up to 50,000 readings in 999 batches. This enables extremely quick readings to be automatically stored, ideal for measuring large surface areas.



Elcometer 456

Elcometer 456 Digital Coating Thickness Gauge:

The new version of the Elcometer 456 now benefits from a larger display for easy data viewing and a simple calibration feature to make testing even quicker.

The Elcometer 456 also features *Bluetooth*[®] wireless technology for fast data transfer to the new ElcoMaster Software[™], ideal for easy report generation and archiving of readings. The *Bluetooth*[®] feature also allows the Elcometer 456 to connect to PDA's and mobile phones for instant reporting and e-mailing from the field.



Elcometer 355

Elcometer 355 Digital Coating Thickness Gauge:

Accuracy, simplicity, versatility and flexibility are the watchwords of the Elcometer 355, a truly state of the art hand-held measuring system packed with time-saving and cost cutting features. The key to the superiority of the Elcometer 355 is its measuring system which features a range of interchangeable Probe Modules capable of an accuracy of $\pm 1\%$ of the reading on a variety of coatings and substrates, including ferrous and non-ferrous substrates.



Elcometer 206DL, 208DL & 207DL Ultrasonic Thickness Gauges:

The Elcometer 206DL has three calibration options and can be used for measuring many different materials including steel, cast iron, plastic, epoxy resin, glass fibre etc.

The Elcometer 208DL is capable of measuring material thickness whilst eliminating the thickness of the coating (on metal substrates only)



The Elcometer 207DL is designed to provide accurate measurements on thin materials including cast iron, plastic, steel, glass, aluminium and thin plastics and is able to store 1000 readings in 10 batches.

ENGLAND

Elcometer Limited
Edge Lane
Manchester M43 6BU

Tel: +44 (0)161 371 6000
Fax: +44 (0)161 371 6010
e-mail: sales@elcometer.com
www.elcometer.com

USA

Elcometer Inc
1893 Rochester Industrial Drive
Rochester Hills Michigan 48309

Tel: +1 248 650 0500
Toll Free: 800 521 0635
Fax: +1 248 650 0501
e-mail: inc@elcometer.com
www.elcometer.com

ASIA & THE FAR EAST

Elcometer (Asia) Pte Ltd
896 Dunearn Rd
Sime Darby Centre #3-09
Singapore 589472,
Republic of Singapore

Tel: +65 6462 2822
Fax: +65 6462 2860
e-mail: asia@elcometer.com
www.elcometer.com

BELGIUM

Elcometer SA
Rue Vallée 13
B-4681 Hermalle /s Argenteau

Tel: +32 (0)4 379 96 10
Fax: +32 (0)4 374 06 03
e-mail: be_info@elcometer.be
www.elcometer.be

FRANCE

Elcometer Sarl
97 Route de Chécy
45430 BOU

Tel: +33 (0)2 38 86 33 44
Fax: +33 (0)2 38 91 37 66
e-mail: fr_info@elcometer.fr
www.elcometer.fr

GERMANY

Elcometer Instruments GmbH
Ulmer Strasse 68
D-73431 Aalen

Tel: +49 (0)7361 52806 0
Fax: +49 (0)7361 52806 77
e-mail: de_info@elcometer.de
www.elcometer.de